

101

C O P E N H A G E N



Brutus Stool - Bone White

Designed by

Kristian Sofus Hansen &
Tommy Hyldahl

Brutus Stool - Bone White

Product Description

Inspired by the Brutalist architecture movement of the mid-20th century, the Brutus Stool is cast in lightweight fiber concrete creating a unique surface texture increasing mobility.

Drawing on traditional Japanese wooden stools, the curved seat and signature cross legs makes for a perfect extra seating around the table.

Emphasizing the fine balance between sharp architectural lines and a soft seating curve, the Brutus Stool is sculptural statement pieces with a compelling seating comfort.

Each piece is hand painted to create a textured, unique surface. Therefore subtle variations in the colour can be expected.

For indoor use.

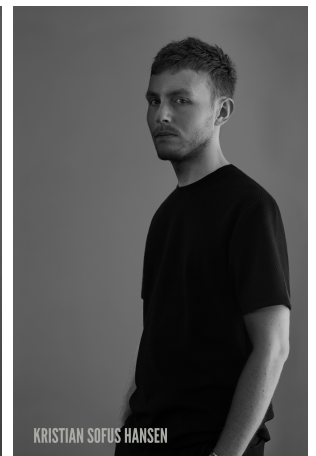
Designer Description

Tommy Hyldahl and Kristian Sofus Hansen intertwine their distinct sensibilities to create designs where storytelling, materiality, and timeless form meet in quiet harmony.

With a background in fashion, Tommy brings an intuitive eye for trends, colors, and textures. His process is one of layering histories, blending details and references from past design periods and reimagining them into something fresh and contemporary. Each collection unfolds as a narrative, evolving from concept to creation, with every element contributing to a greater story.

Kristian, who has lived and studied in Japan, seeks to unite Japanese aesthetics with Danish design, creating a characteristic twist on simplicity itself. His work is defined by the search for subtle, original details that elevate each piece with a unique signature. Drawing inspiration from art and sculpture, his creative process unfolds in new and exciting ways, always striving to craft designs that are both functional and timeless.

Together, they craft design that transcends time, poetic yet practical, expressive yet enduring.



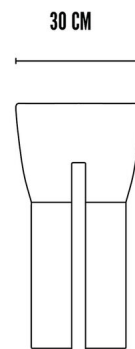
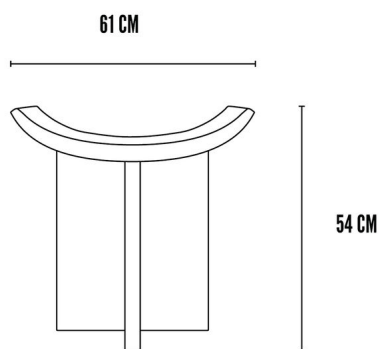
Brutus Stool - Bone White

Main

SKU	247008	Product Family	Brutus
Product name	Brutus Stool - Bone White	Color	Bone White
Product Type	Stool	Size	Regular
		Unit	Piece

Logistics

EAN number	4251501413653	Package - CBM	0.164
Package height in cm	62.00	Package - Weight KG	13.000
Package width in cm	39.00	Tariff Code No	9401790000
Package length in cm	69.00	Country of origin	China
Suitable for Courier	Yes	Quantity of Inner Boxes	1



Brutus Stool - Bone White

Product

Materials	Fiber Concrete	Net weight in kg	10.5
Item Height in cm	54.00	Space Suitability	
Item width in cm	30.00	Strength Test	N/A
Item length in cm	60.00	FSC Wood	N/A

Upholstery

Fabric		Cigarette Test - CAL-117
Martindale	N/A	Cigarette Test - EN 1021-1
Colour Fastness to Light		Cigarette Test - BS5852 Part 1
Pilling		Match Flame Test - EN 1021-2
Oeko Tex		Ignition Source 5 (Crib 5) - BS 5852 Part 2
Fire Test Foam	N/A	NF P92-507 - Class M1

Brutus Stool - Bone White

Family Description Text

Inspired by the Brutalist architecture movement of the mid-20th century, the Brutus collection embodies bold sculptural forms, architectural precision, and refined craftsmanship. Brutalism, known for its monumental structures, exposed materials, and emphasis on honesty of form, celebrated strength and functionality over ornamentation. The Brutus collection translates these principles into furniture, defined by the interplay of sharp lines and gentle curves, where strength meets softness to create designs that are both striking and inviting.

The series is offered in two expressions, each highlighting different qualities of the design. In fiber concrete, the collection features a distinctive hand-painted surface that gives every piece its own unique texture. The raw tactility enhances the sculptural presence of the furniture, while its form ensures mobility and flexibility in use. In wooden, the collection is reinterpreted to showcase organic warmth and timeless appeal. The natural grain is allowed to shine, evolving beautifully over time while reinforcing the balance between architectural strength and human comfort.

Together, the two expressions in fiber concrete and wooden capture the essence of Brutalism through contrasting qualities: one emphasizing raw, textured surfaces, the other highlighting natural warmth and refinement. Whether in fiber concrete or wood, the Brutus collection stands as a sculptural statement of design and craftsmanship, merging architectural clarity with inviting comfort.

Color Description

Hand-painted in a clean, bone white, this shade combines purity with subtle warmth. Its quiet brightness brings clarity and softness, while brush stroke variations create delicate movement, making each piece distinct and full of character.

Brutus Stool - Bone White

Maintenance Guide Description

Hand-painted fiber concrete is strong and resilient, yet its artisanal finish requires thoughtful care. Dust surfaces regularly with a soft cloth, and for routine cleaning, use a damp cloth with mild, pH-neutral soap, then dry thoroughly. Avoid abrasive pads, solvents, or acidic and alkaline cleaners, as these can damage the hand-painted layer.

Always protect surfaces with coasters, mats, or felt pads to prevent scratches, stains, and heat marks. Wipe spills immediately to reduce the risk of absorption, and avoid prolonged exposure to standing water. To preserve its finish, keep furniture away from direct sunlight, high humidity, and extreme temperature changes.

With simple, mindful care, hand-painted fiber concrete furniture will maintain its unique character, depth, and elegance for years to come.

Materials Description

Hand-painted fiber concrete combines strength with artistry, transforming an industrial material into a refined surface for pieces that enrich the home. Reinforced with fibers for durability, it offers resilience against everyday use while remaining lightweight and versatile. Each piece is painted by hand, creating subtle variations in tone and texture that make every surface unique.

The result is a finish that balances raw honesty with crafted detail, bringing depth, character, and individuality to contemporary interiors.